

# DATA SHEET

Art.no.:  
Q9MSL-2

## ONEPOLE PRO 1500 with footplate CC160

Q9MSL-2

HS-Code: 7610909092

### Net Weight

7,32kg

### Gross Weight

7,75kg

### Net Dimension

1494x220x220mm

### Gross Dimensions

1515x225x225mm

### Material

Powder-coated searesistant aluminum

### Color (standard)

RAL9005

### Surface Treatment

Powdercoated ISO 12944, Category C4

### Protection Class

Class I, must be connected to PE

### Accessories

4 pcs. M20 Plastic washer DIN125 (for CC160 footplate)

### Premounted

4 pcs. M5x20 CS DIN7991

4 pcs. M5x10 CS DIN7991

1 pcs. Blind lid

1 pcs. Access panel

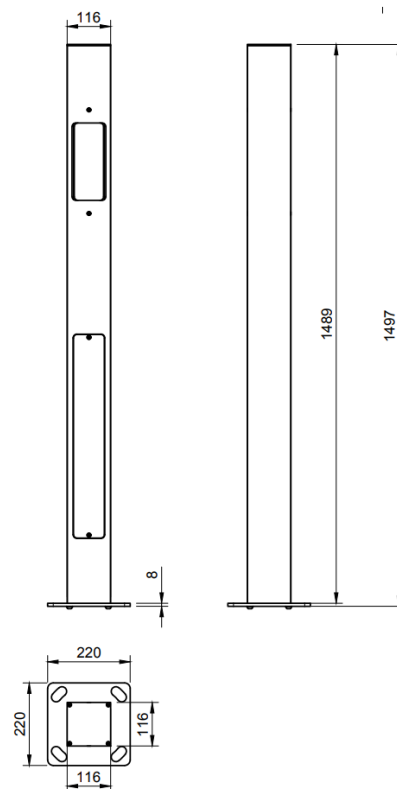
1 pcs. Top lid

Grounding:

1 pcs. M6 nut DIN934

M6 washer DIN127B

M6 washer DIN125A



Complete  
EV Infrastructure

Data sheet | 2026 | [www.onepole.no](http://www.onepole.no)

Produced and designed in Norway 

# DATA SHEET

Art.no.:  
Q7VH5

## ONEPOLE Connection kit - 6 Pole (5pcs)

Q7VH5

HS-Code: 8536909500

**Net Weight**

0,6kg

**Gross Weight**

0,66kg

**Net Dimension**

88x54x32mm 5pcs

**Gross Dimensions**

190x95x65mm

**Color (standard)**

Green, Blue and White

**Surface Treatment**

Plastic

**Max Voltage**

450V

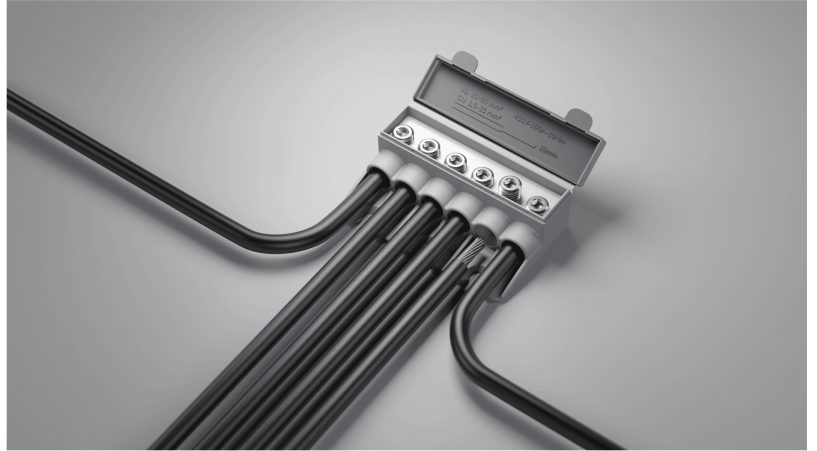
**Max Load**

100A

**Premounted**

5 pcs 6x25/50mm<sup>2</sup> Al/CU

1 pcs earth wire



Complete  
EV Infrastructure

Data sheet | 2026 | [www.onepole.no](http://www.onepole.no)

Produced and designed in Norway 

# DATA SHEET

Art.no.:  
Q9TF6

## ONEPOLE PRO Top Lid Kit

Q9TF6

HS-Code: 7610909092

**Net Weight**

0,12kg

**Gross Weight**

0,14kg

**Net Dimension**

116x116x3mm

**Gross Dimensions**

120x120x19mm

**Material**

Powder-coated searesistant aluminum

**Color (standard)**

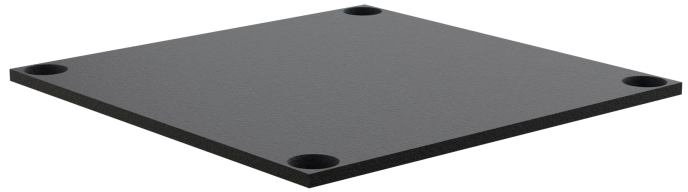
RAL9005

**Surface Treatment**

Powdercoated ISO 12944, Category C4

**Accessories**

4 pcs. M5x20 CS DIN7991



Complete  
EV Infrastructure

Data sheet | 2026 | [www.onepole.no](http://www.onepole.no)

Produced and designed in Norway 